



# Ewha International Summer College 2018

“

## Why Choose Seoul? Imagine your Korea

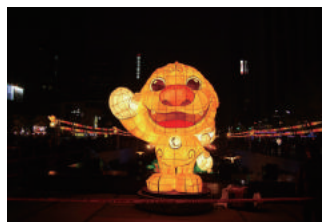
Seoul is the business and cultural hub of South Korea, where skyscrapers tower over Buddhist temples. Take it all in from the N Seoul Tower, built atop a peak in Namsan Park. The teahouses and shops of Insadong give you a taste of Korean flavor, which you can further experience with a visit to the grounds and museums of Gyeongbokgung. UNESCO World Heritage Site Changdeokgung Palace is a fine example of authentic ancient architecture. *(trip advisor)*

”



### Quick Facts about Seoul and Korea

- Korea is visited by 10 million international travelers annually
- Population in Seoul: 10,204,057 (2017)
- 12 UNESCO World Heritage Sites in Korea (2017)
- Seoul has 4<sup>th</sup> largest metropolitan economy in the world
- Seoul is world's most wired city, 1<sup>st</sup> in technology readiness *(Cities of Opportunity)*
- Incheon International Airport voted as the world's best airport for 9 years
- The 28<sup>th</sup> Olympic Winter Games to be held in PyeongChang 2018



## Ewha Womans University

“...among Seoul's most beautiful campuses, with its mix of old, Gothic-style buildings and a very modern Ewha Campus Complex (ECC).” *(Visitseoul.net)*



Founded in 1886, Ewha Womans University is Korea's first pioneering educational institution for women. It has grown to become one of Asia's most prestigious universities, and over 1,300 male and female students from more than 60 countries visit Ewha each year for various programs to experience Ewha's leading global infrastructure and quality education. As a comprehensive research university, Ewha has 14 colleges and 15 graduate schools, and over 500 courses across 73 major departments are taught in English every semester. Ewha is ranked #1 in Leiden for a Korean university (2013-2017) and selected for Advancement of College Education (ACE) project from the Ministry of Education to receive 9 million USD.



# International Summer College

## Internationally Diverse

Since 1971, Ewha International Summer College brings together an incredibly diverse group of students to experience the best of Korea.

Ewha is the place to experience authentic Korean university life with students from 75+ universities and 15+ countries. You can look forward to making life-long international friends while at Ewha.



## Friendly Staff and Support

Ewha ISC will help you with academic, personal and social needs to make your 4 weeks at Ewha unforgettable. Prior to your arrival at Ewha, you will be matched with an **Ewha PEACE buddy** who will give you a campus tour, arrange events in small groups and help you take a full advantage of life at Ewha in Korea. *We are here for you!* Even before your arrival in Korea, our dedicated staff will reach out to you and coordinate throughout your stay at Ewha.



## Academic Engagement

With class sizes ranging from 5 to 40, you will be immersed in an intimate and interactive learning environment amongst passionate professors and peers. Discover a wide multitude of diverse courses that will challenge your perspectives beyond the classroom.



June 26 - July 24, 4 weeks

SUN	MON	TUE	WED	THU	FRI	SAT
6.24	6.25 ✈️ Check-in	6.26 🌟🌟🌟 Welcoming Ceremony & Orientation	6.27 🎉 Course Commencement	6.28 ➔ Class	6.29 🌟🌟🌟 Field Trip	6.30
7.1	2 ➔ Class	3	4	5	6 🌟🌟🌟 Field Trip	7
8	9 ➔ Class	10	11	12	13 🌟🌟🌟 Field Trip	14
15	16 ➔ Class	17	18	19	20 🌟🌟🌟 Field Trip	21
22	23 🕒 Last day of Class	24 👋 Farewell Ceremony	25 ✈️ Check-out	26	27	28



# Sample Subject Courses

You can find over 40 courses in various academic disciplines. All courses are taught in English by faculty from top universities around the world including Ewha.

Each course carries 3 credits and you may choose 1-3 courses that can be credit-transferred to your home university. After completing the program, we will send an official transcript to help you transfer credits.

## Art (studio-type)

Korean Ceramics  
Korean Traditional Dance  
Korean Traditional Music  
Korean Traditional Painting

## Business & Economics

Corporate Finance  
Financial Management  
Global Economic Issues  
International Trade  
Macroeconomics  
Microeconomics  
Principles of Accounting Information

## Humanities

Advanced Topics in East Asian Religion  
Contemporary Korean and Korean American Fiction  
Modern Western History through Themes  
Philosophy

## Korean and East Asian Studies

Gender Relations in Korea  
History of Korean Tradition and Folk Culture  
Korean Film History  
Modern History of Korea  
Sex, Gender, Sexuality in Korea  
Women's History of Korea

## Law, Politics & International Studies

Comparative Politics  
International Relations of North Korea with East Asian Countries  
Introduction to International Relations  
Law and Economic Development

## Science & Engineering

Biology I  
Biology of Sustainability  
C++ Programming  
Calculus I  
Understanding Organic Chemistry

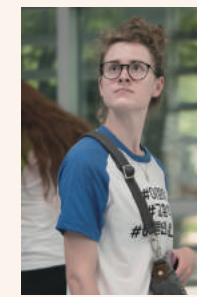
## Social Science

Advertising & Society: Controversial Issues in Advertising  
Developing Authentic Leadership & Communication Skills  
Feminist and Queer Disability Studies  
Globalization and Inequality  
Intercultural Communication Theories and Practice  
Cultural Globalization Between the U.S. and Asia  
Social changes, challenges, and future of Asia:  
Building better society through global collaboration  
Film & Media Studies

## Korean Language

Level 1 (Basic)  
Level 2 (Intermediate)  
Level 3 (Advanced)  
Level 4 (Highly Advanced)

Please note the courses listed are sample and are subject to change. For most current information, visit [summer.ewha.ac.kr](http://summer.ewha.ac.kr) and click on the "Course Info & Field Trip (ISC)" tab.



# Friday Field Trips

The Ewha ISC organizes Friday trips to must-visit tourist sites in Seoul to help you experience Korean tradition and culture of contemporary Seoul. After the application is submitted, you can sign-up for the activities below:

- Korean Folk Village**
- Cooking Korean food**
- Everland**
- Non-verbal Performance**
- Demilitarized Zone (DMZ)**
- Temple Stay**



## 10 Reasons to Choose Ewha ISC



**Friendly** staff and care from Office of International Affairs



**Intimate and interactive** learning environment



Ewha has its **own** subway stop



**Competitive** fees



Courses are taught by **dedicated** professors



Located in vibrant and young town, **Shincheon**



**48 years** of providing international summer program



**PEACE buddy** is matched **1:1** to help you adjust life at Ewha and in Korea



**International on-campus dormitory** is guaranteed



**99% of the participants** recommend our program and would return for another summer!

# Summer Special Program



Does 4-week long Ewha ISC feel too short? You can join the Summer Special Program to learn Korean and culture!

The SSP is a separate short-term summer program designed to offer language courses as well as thematic lectures on Korean culture to help you get acquainted with Korea.








## Schedule

DAY	AM (09:00 - 12:00)	PM (13:30 - 15:00, 15:30 - 18:30)
Mon - Thu	<b>Korean Language Class</b> Level 1 (Basic) Level 2 (Intermediate) Level 3 (Advanced)	<b>Special Lecture</b> Korean Heritage / Korean Cinema / Korean History / Relations with North Korea / Korean Women and Society / Learn K-pop dance  <b>Half-day Field Trip</b> National Museum of Korea / Korean Movie Theater / Traditional Music Performance / Kimchi making & cooking
Fri - Sat	<b>Special Cultural Excursion Trip</b> <i>2 Days &amp; 1 Night at Korean Traditional Folk Village</i> An overnight trip to a traditional folk village takes place on the first weekend of the program, enabling students to experience authentic Korean local culture and life through the following activities: Water rafting / Staying in a traditional Korean-style home / Watching a traditional mask dance / Tasting traditional local cuisine	

Please note topics in special lectures & field trips are subject to change

## August 7 - 21, 2 weeks

SUN	MON	TUE	WED	THU	FRI	SAT
			1	2	3	4
						
5	6  Check-in	7 Welcoming Ceremony & Orientation	8  Course Commencement	9	10  Special Cultural Excursion Trip	11
12	13	14	15 NO school National Holiday	16	17	18
19	20	21	22  Farewell Ceremony Check-out	23	24	25
26	27	28	29	30	31	

# On-campus Housing

The International House (I-House) is available for all registered ISC and SSP students. Located in the heart of Ewha campus, the I-House is only a few minutes away within walking distance to all classes. The I-House has its own gym that is open for 24 hours, a co-op store, computer labs, lounges, kitchenettes, laundry facilities and more. Rooms are conditioned by central heating and air conditioning.

On your check-in day, you will be provided with two bed sheets, a pillow and a pillowcase. Rooms in the I-House are fully furnished with a bed, a desk, a desk lamp, a closet, a bookshelf, and a refrigerator and are equipped with wifi internet connections. Although it does not include any meal plans, you can easily find 9 different cafeterias on campus alone and diverse international cuisines off campus all within 5-minute walk from the front gate of the university. Students pay for housing fee after they arrive at Ewha.



	Check-in Date	Check-out Date	Double Room*	Single Room*
International Summer College	June 25	July 25	640,000 KRW	880,000 KRW
Summer Special Program	August 6	August 22	480,000 KRW	650,000 KRW

\* Housing fee is based on summer 2017 and is subject to change

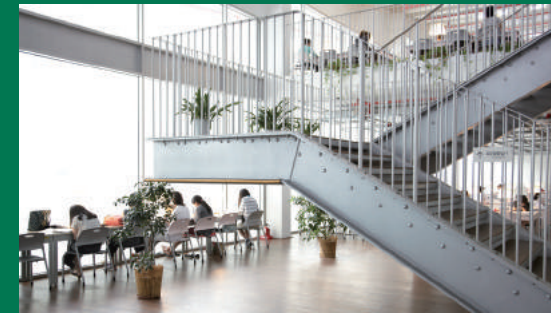
## Double Room



## Single Room A Type (bathroom in the room)



## Single Room B Type (bathroom on the floor)



## Other Facilities

### Lounge



- Open 24 hours
- Watch cable TV and socialize!

### Kitchen



Located on each floor, equipped with microwave, toaster, electronic pot and water fountain

### Laundromat



- Laundry machines, dryers and iron available
- Pay less than 1 USD / time



# Admission

## Application Deadlines

	International Summer College	Summer Special Program
Early Bird	<b>March 30*</b>	<b>May 25**</b>
Regular	May 11	June 29

\*receive 20% discount on tuition by applying and completing payment.

\*\*receive 10% discount on tuition by applying and completing payment.

## Eligibility

- Submission of completed online application AND
- Any undergraduate or graduate students currently enrolled in university OR
- Prospective students entering university in September 2018 OR
- Students who graduated from university in 2018

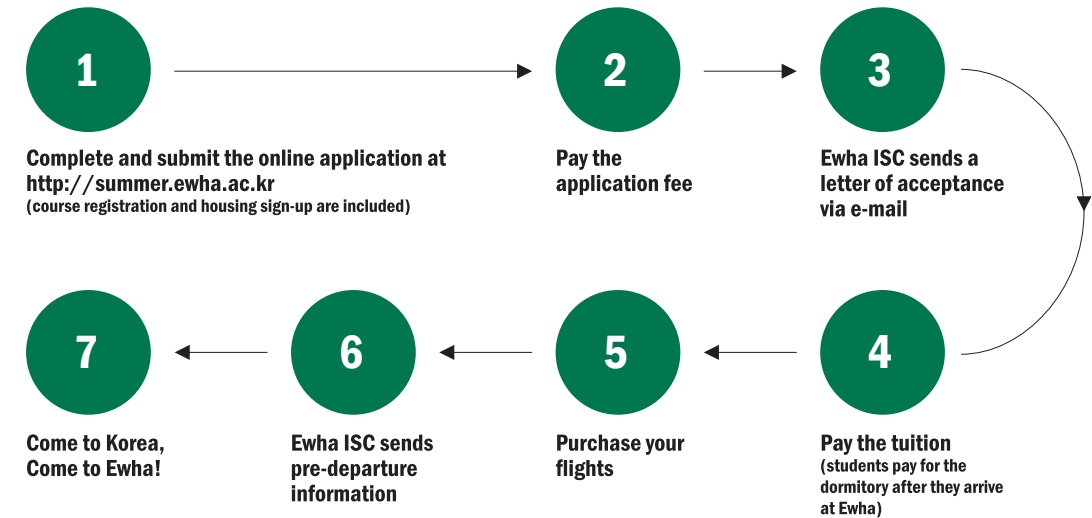
## Required Materials

For the online application, you will need to upload the following documents:

- face picture (3 cm X 4 cm) in jpg file format
- scanned copy of college or university enrollment or transcript
- scanned copy of passport bio-page
- scanned copy of overseas traveler's insurance\*

\*If a copy of insurance policy or purchase receipt is not available at the time of submission, it can be e-mailed to gosummer@ewha.ac.kr after the admission.

## Application Procedure



## Fees

	International Summer College	Summer Special Program
Application Fee (KRW)	100,000	100,000
Tuition (KRW)	3,600,000 (3 courses) <b>&gt;&gt; 2,880,000*</b> 3,000,000 (2 courses) <b>&gt;&gt; 2,400,000*</b> 1,800,000 (1 course) <b>&gt;&gt; 1,440,000*</b>	1,800,000 <b>&gt;&gt; 1,620,000**</b>



# Ewha International Summer College

Office of International Affairs  
B334 ECC, Ewha Womans University  
52 Ewhayeodae-gil, Seodaemun-gu,  
Seoul 03760, South Korea

Tel. 82-2-3277-3160

Fax. 82-2-364-8019

Website. [summer.ewha.ac.kr](http://summer.ewha.ac.kr)

E-mail. [gsummer@ewha.ac.kr](mailto:gsummer@ewha.ac.kr)

Facebook. [ewhasummer](https://www.facebook.com/ewhasummer)

Instagram. [ewhasummer](https://www.instagram.com/ewhasummer)



EWHA WOMANS UNIVERSITY